

Research Data Center (FDZ)
of the German Federal
Employment Agency (BA)
of the Institute for
Employment Research (IAB)

The RDC in RDC approach – IAB data for the US

First European Data Access Forum
(EDAF)
2012/03/28, Luxembourg

Stefan Bender, IAB
David Schiller, IAB
Jörg Heining, IAB

Introduction

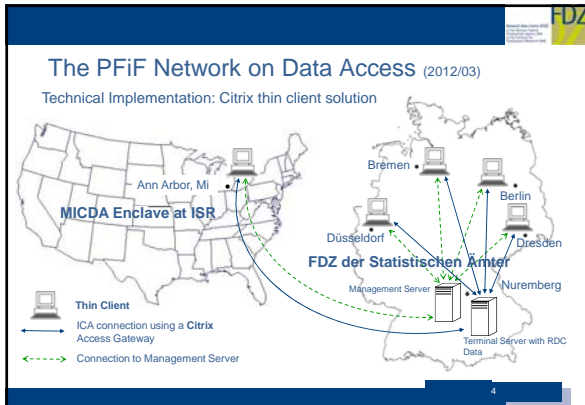
- The FDZ offers highly detailed microdata on individuals and establishments
- Data must be stored at the facilities of the data provider for legal reasons
- IAB provides a number of locations for on-site use in order to ease access to data
- Each of them are safe centres
- To access data in Nuremberg these locations use secure remote access connections

2

Basic description

- **RDC in RDC approach:**
- Comparable standards in nearly all RDCs over the world
- Access to BA/IAB data can be granted from other RDCs or comparable institutions
- in Germany
- and abroad:
- Funding provided by Federal Ministry of Education and Research
 - Project duration 10/2010-9/2013

The diagram shows a map of Germany with a yellow box labeled 'FDZ' in Nuremberg. A cloud labeled 'Foreign country' has arrows pointing to several locations in Germany, with one arrow pointing specifically to the FDZ in Nuremberg.



- ### Organisational Structure – Focus on US
- Home RDC (Nuremberg)
 - General permission and contract
 - Provision of data
 - Output control
 - Guest RDC (Ann Arbor)
 - Physical admission control
 - Coordination of guest stays and local requirements
 - Currently: Support for researchers by a FDZ staff member

- ### Challenges
- Additional requirements for data security and confidentiality, e.g.:
 - Human Subject Review (ethics commission)
 - German law for the data stored in Germany but
 - access facility and researchers are under US-law
 - Differences in the legal systems (historical background)
 - Different departments are involved on both sides this results in a lot of coordination work

FDZ

Summary

- Overcome organisational and legal obstacles
 ⇒ it is hard but possible
- There is demand for data from foreign countries if it is accessible
- A first step to ease international and comparative research
- More locations will be available in Europe and the US in the near future

7

Research Data Center (RDC)
of the German Federal
Employment Agency (IAB)
of the Institut für
Employment Research (IAB)

FDZ

Thank you for your attention

David Schiller
david.schiller@iab.de
+49 911 179-8381

<http://fdz.iab.de>
